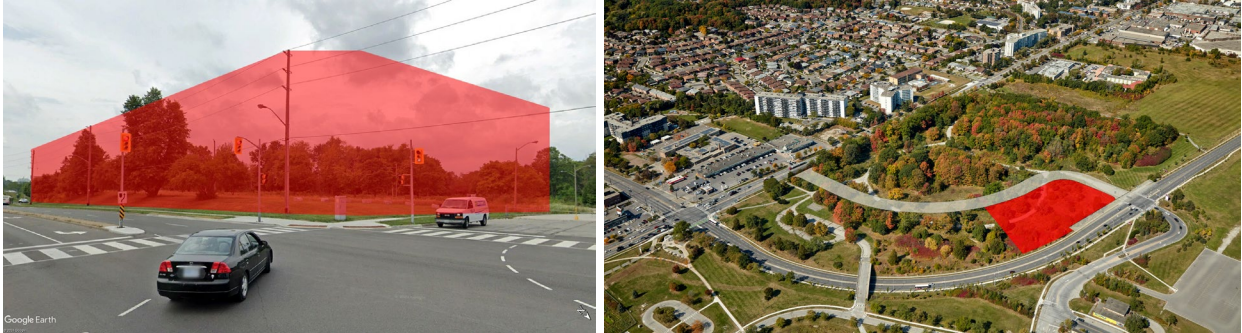


# Arbo Downsview

## Request for Expression of Interest (RFEOI)

1350 Sheppard Ave W. North York, ON M3K 2C5



The site is located within the first phase of the Arbo neighbourhood in Toronto and is aiming to provide about 280 units of housing with minimum 30% dedicated affordable homes. This parcel is **1-hectare (2.4-acres)**, is currently vacant and will be available at a discounted lease rate.

Arbo is one of five planned neighbourhoods that surround Downsview Park in Toronto. It is a master planned, mixed-use community that offers housing, including affordable housing and homes for seniors, commercial, retail and services within close proximity to Downsview Park Station TTC and GO Stations. Arbo will bring new parks and green spaces, including the preservation of the heritage woodlot that bring residents and visitors close to nature.

Canada Lands is recommending apartment housing be considered as all or part of this initiative for Arbo.

**Affordability:** The minimum requirement for affordability is established by the FLI program, at least 30% of the units must be made available at rents not more than 80% of the Median Market Rental Rent, as established by CMHC, within the City of Toronto.

**Accessibility:** 20% of all units must meet or exceed accessibility standards as prescribed in the RFEOI, while the entire project – including common areas and dwelling units, must have universal accessibility incorporated into the design.

**Energy efficiency:** The project is required to achieve improved energy performance, which will be demonstrated by modelling a decrease in energy consumption and/or greenhouse gas emissions as outlined in the RFEOI.

Work with the municipality is underway to finalize the subdivision approval for the parcel.

To learn more about Arbo and how to submit an application, [please visit the Arbo project page](#).

[www.clc-sic.ca](http://www.clc-sic.ca)